

## Entry Level

# 8 Flatley Avenue

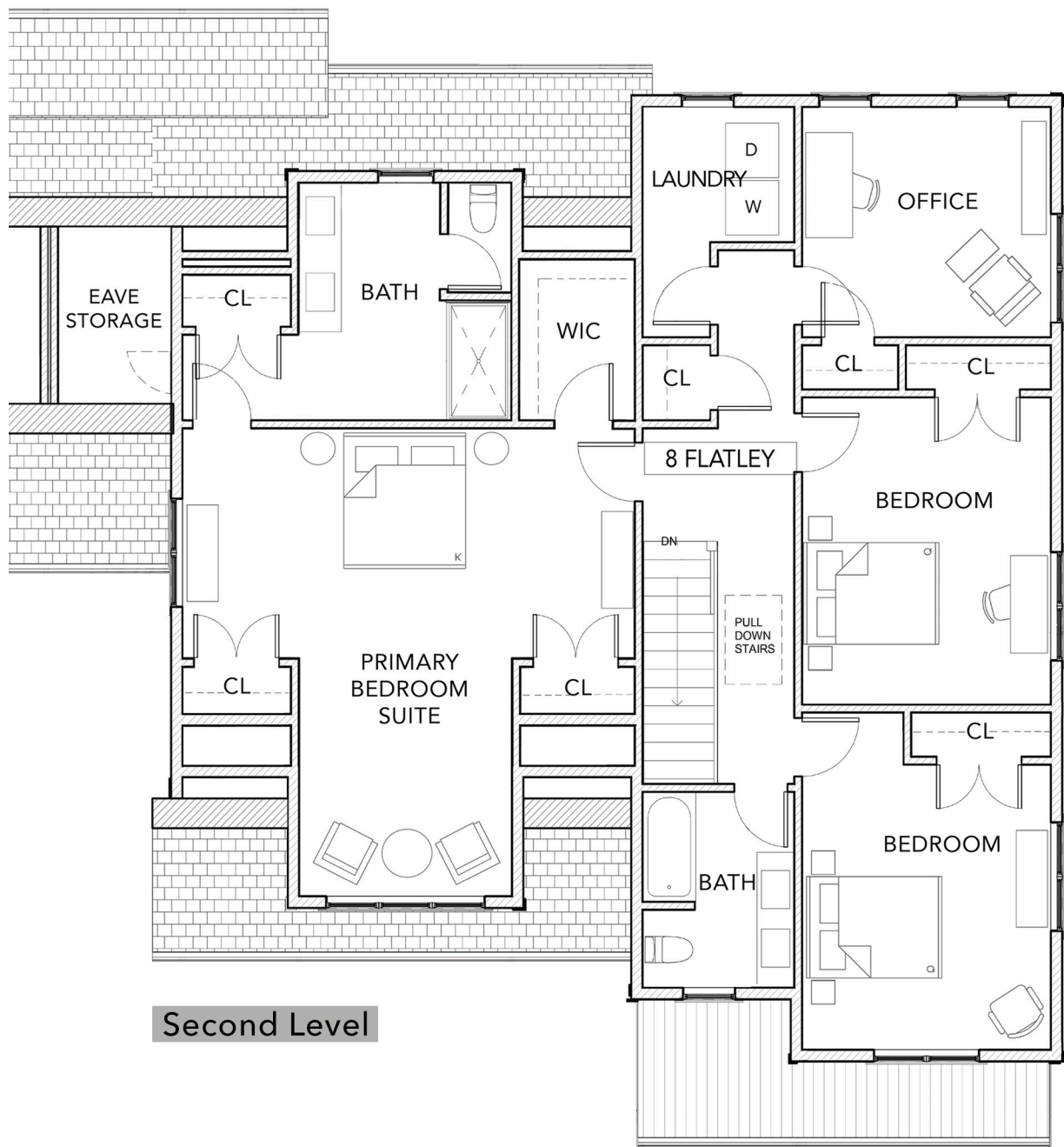
Manchester-by-the-Sea

- ▣ 4 Bedrooms/3.5 Bathrooms + Office + Recreation Room
- ▣ 2 Car Garage + 1 Surface Space
- ▣ Private Yard, Deck and Patio
- ▣ +/- 3,881 sq/ft

Online at [www.flatleyave.com](http://www.flatleyave.com)

All information is deemed reliable but is subject to errors and omissions. Renderings and floorplans are for illustration purposes only and are subject to change.

# 8



Second Level

# 8 Flatley Avenue

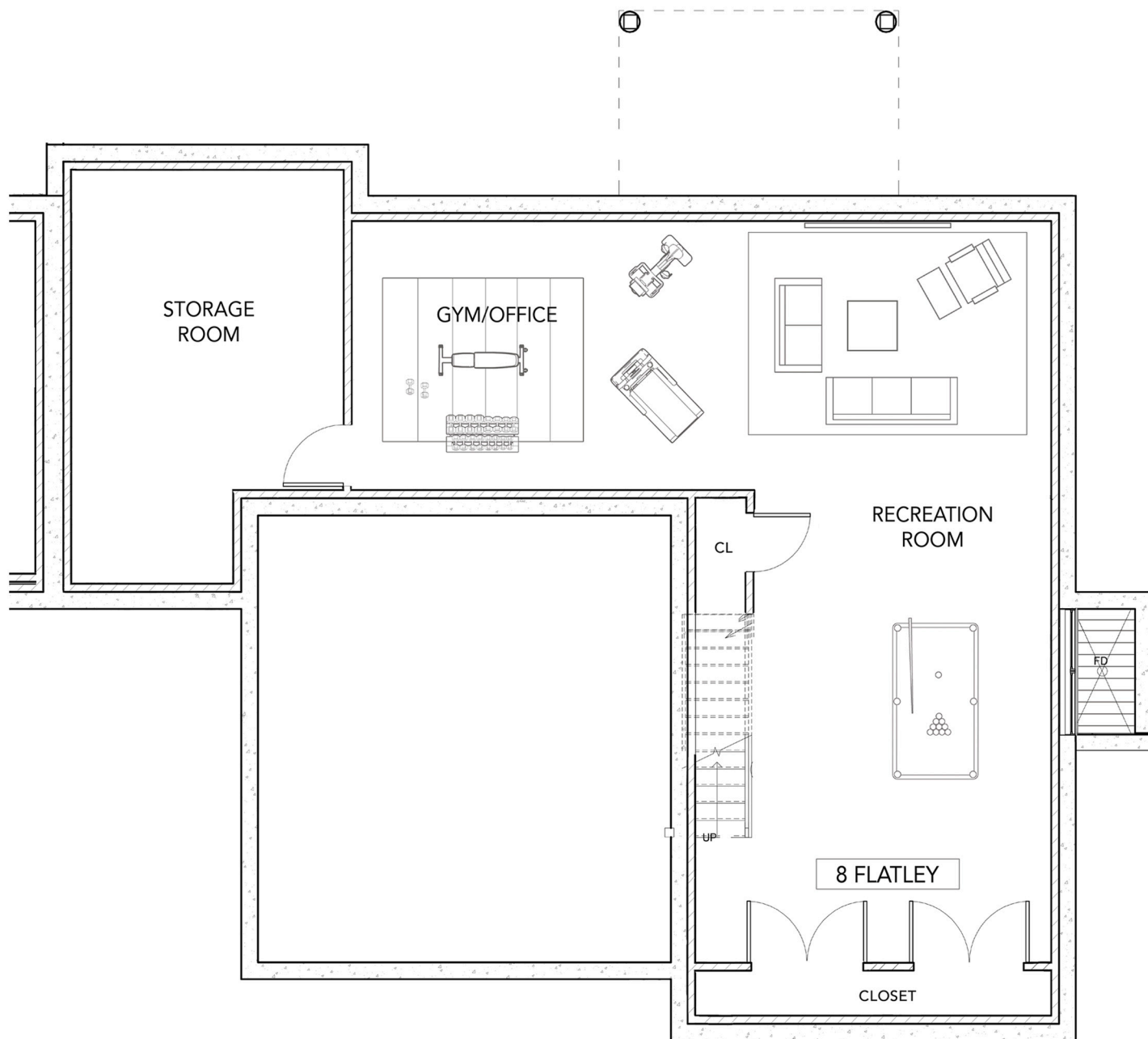
Manchester-by-the-Sea

- ▣ 4 Bedrooms/3.5 Bathrooms + Office + Recreation Room
- ▣ 2 Car Garage + 1 Surface Space
- ▣ Private Yard, Deck and Patio
- ▣ +/- 3,881 sq/ft

Online at [www.flatleyave.com](http://www.flatleyave.com)

All information is deemed reliable but is subject to errors and omissions. Renderings and floorplans are for illustration purposes only and are subject to change.





**Finished Basement**

# 8 Flatley Avenue

Manchester-by-the-Sea

- ▣ 4 Bedrooms/3.5 Bathrooms + Office + Recreation Room
- ▣ 2 Car Garage + 1 Surface Space
- ▣ Private Yard, Deck and Patio
- ▣ +/- 3,881 sq/ft

Online at [www.flatleyave.com](http://www.flatleyave.com)

All information is deemed reliable but is subject to errors and omissions. Renderings and floorplans are for illustration purposes only and are subject to change.

**8**